

---

# **magicolor<sup>®</sup> 5450/7400/7450 Firmware Updater Guide**

---

**4138-9560-02A**

**1760573-001C**

---



---

# Contents

---

<b>1</b>	<b>Updating the Firmware (for Windows)</b> .....	<b>1</b>
	<b>System Requirements</b>	<b>2</b>
	<b>Starting the Firmware Updater</b>	<b>3</b>
	<b>For a Network Connection</b>	<b>6</b>
	If Spooling of the Data Fails	8
	<b>For a Local Connection</b>	<b>9</b>
	If Spooling of the Data Fails	11
	<b>When Specifying the IP Address of the Printer</b>	<b>12</b>
	If Transferring of the Data Fails	14
<b>2</b>	<b>Updating the Firmware (for Macintosh)</b> .....	<b>15</b>
	<b>System Requirements</b>	<b>16</b>
	<b>Starting the Firmware Updater</b>	<b>17</b>
	If Transferring of the Data Fails	21



---

***Updating the  
Firmware  
(for Windows)***

---

**1**

# System Requirements

- Computer:
  - PC with a Pentium 2, 400 MHz or faster processor  
(A Pentium 3, 500 MHz or faster processor is recommended.)
- Operating system:
  - Microsoft Windows XP Home Edition/Professional, Windows 2000
- Available hard disk space:
  - Approximately 20~26 MB
- Memory:
  - 128 MB or more
- Interface:
  - 10Base-T/100Base-TX/1000Base-T Ethernet
  - USB 2.0 (High Speed) compliant
  - Parallel (IEEE 1284)
- Compatible printer:
  - magicolor 5450
  - magicolor 7440
  - magicolor 7450

# Starting the Firmware Updater



## CAUTION

Before starting the firmware updater, turn on the printer, and make sure that it is correctly connected.

---

---



## CAUTION

When the firmware is updated, the printer control panel settings may return to their defaults. Before starting the firmware updater, be sure to print the configuration page to check the settings. For details on printing the configuration page, refer to the printer's User's Guide.

---

---



## CAUTION

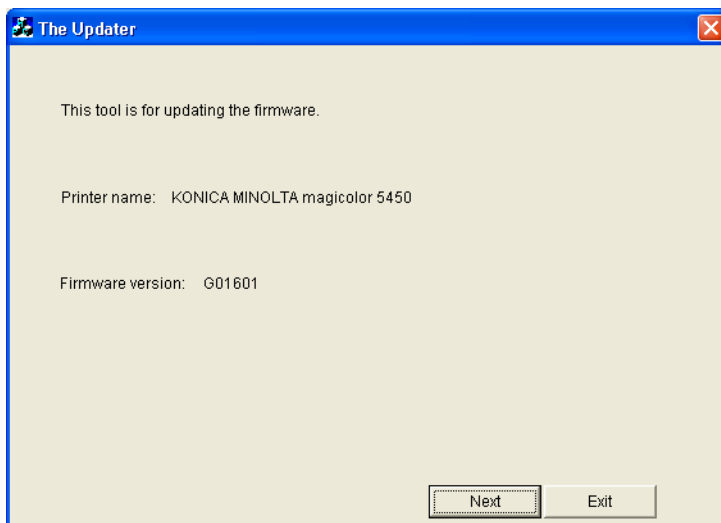
Do not perform any of the following operations while updating the firmware.

- Turn off the printer.
  - Turn off the computer running the firmware updater.
  - Exit the firmware updater.
  - Send a print job to the printer from any other computer on the network.
- 
- 

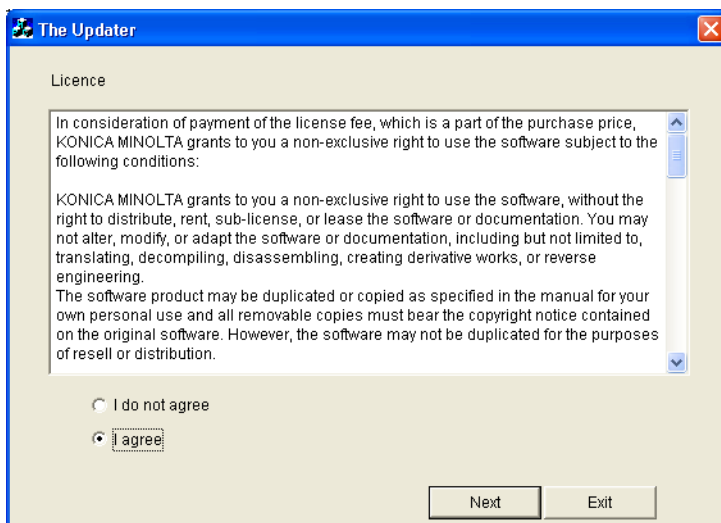
The following procedure describes how to update the firmware for magicolor 5450. Follow the same procedure to update the firmware for magicolor 7440 and magicolor 7450.

- 1 Download the firmware updater from the web site.
- 2 Double-click "5450Gxxxxxxx.exe".

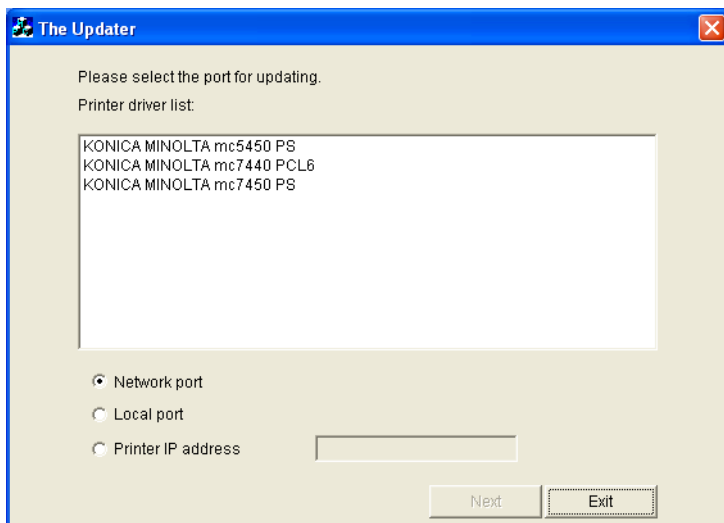
- 3 The printer name and firmware version are displayed. Click the [Next] button.



- 4 The license agreement is displayed. Select "I agree", and then click the [Next] button.



- 5 The list of printer drivers is displayed. Select the appropriate connection for the environment where the printer is being used.



For a Network Connection	Select " <b>Network port</b> ". → Continue with page 6.
For a Local Connection	Select " <b>Local port</b> ". → Continue with page 9.
When Specifying the IP Address of the Printer	Select " <b>Printer IP address</b> ". → Continue with page 12.



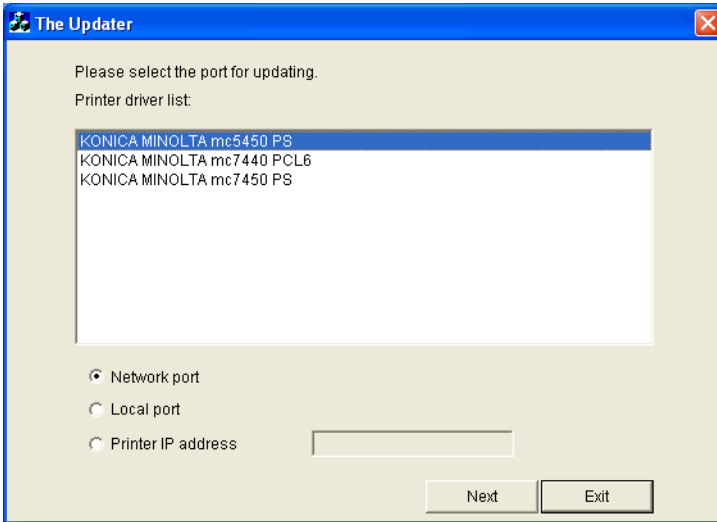
*If you select "**Network port**" or "**Local port**", make sure that the printer driver has been installed.*

*If you select "**Printer IP address**", the firmware can be updated even if a printer driver is not already installed.*

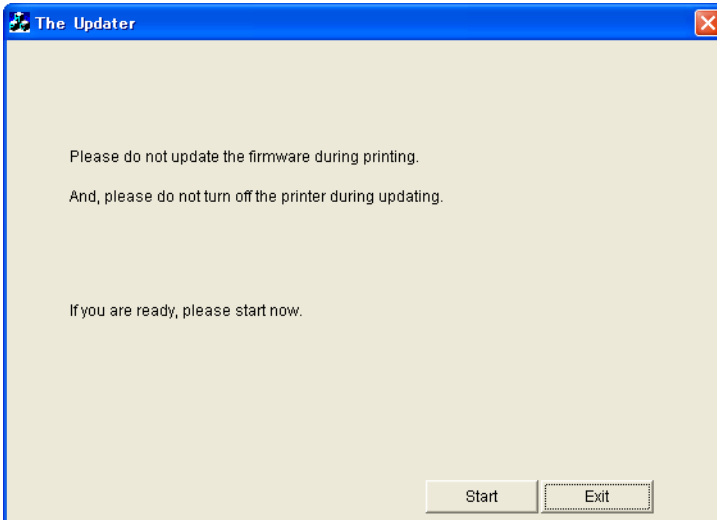
# For a Network Connection

When “**Network port**” is selected, a list of printer drivers for the network port appears.

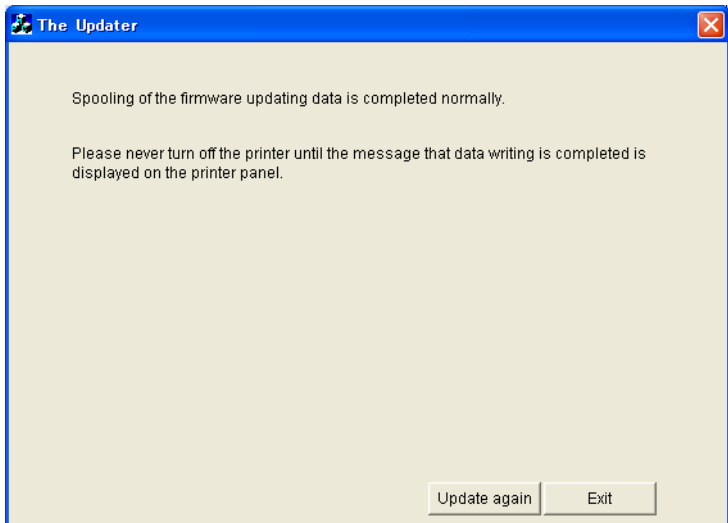
- 1 Select the printer driver, and then click the **[Next]** button.




- 2 A message appears, requesting confirmation to update the firmware. Click the **[Start]** button to begin transferring the firmware.




- 3 The result of the firmware transfer is displayed. Click the **[Exit]** button.




 *If the firmware was successfully updated, the printer will automatically restart.*

*Do not turn off the printer while its firmware is being updated.*

- 4 Print the configuration page from the printer's control panel to check the settings.

 *When the firmware is updated, the printer control panel settings may return to their defaults. Refer to the configuration page that was previously printed to reset the settings from the printer's control panel.*

 *For details on printing the configuration page and using the printer's control panel, refer to the printer's User's Guide.*

## If Spooling of the Data Fails

If spooling of the data fails, the following message appears.



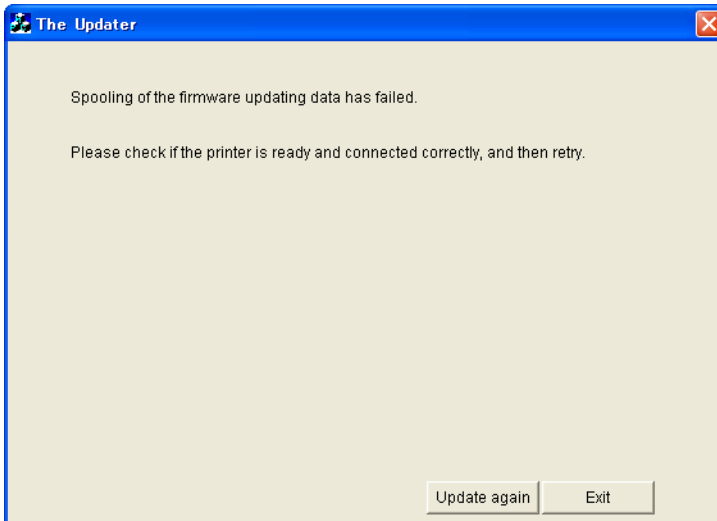
*If spooling fails, data may remain in the printer spooler. Delete this data, and then try again.*

- (Windows XP)  
Click “**Printers and Faxes**” in the **Start** menu, and then double-click the appropriate printer icon. Select “5450Gxxxxxxx” below “**Document Name**”, and then click “**Cancel All Documents**” in the **Printer** menu or “**Cancel**” in the **Document** menu.
- (Windows 2000)  
Click “**Printers**” in the **Start** menu, and then double-click the appropriate printer icon. Select “5450Gxxxxxxx” below “**Document Name**”, and then click “**Cancel All Documents**” in the **Printer** menu or “**Cancel**” in the **Document** menu.

1 Click the [OK] button.



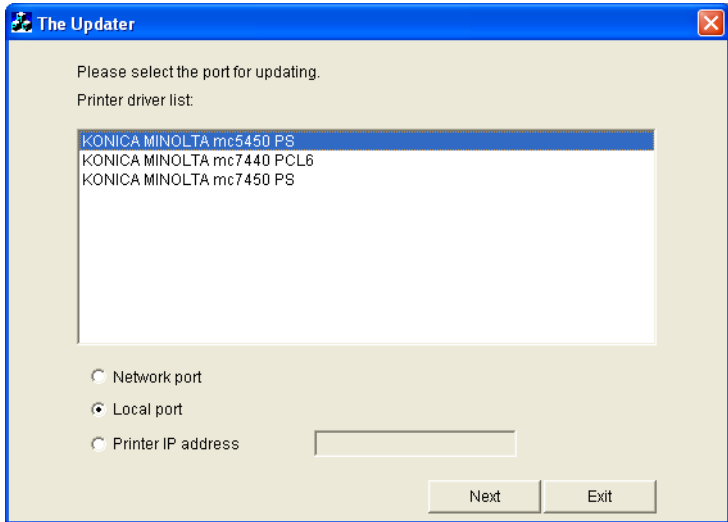
2 Check that the printer is ready and that it is correctly connected, and then click the [**Update again**] button.



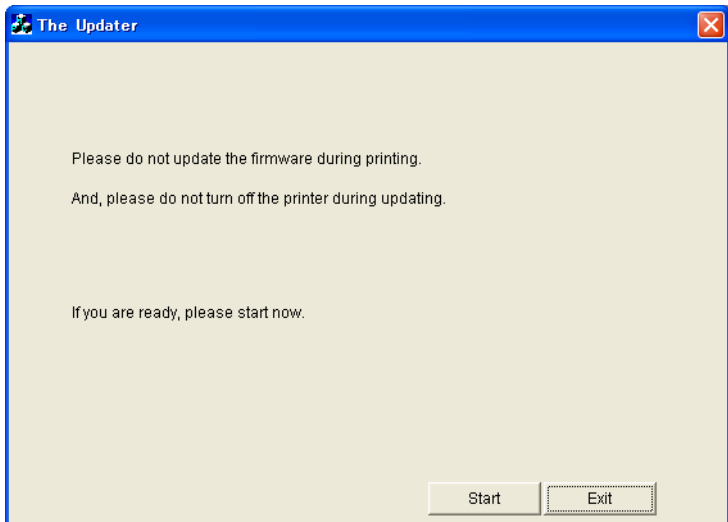
# For a Local Connection

When “**Local port**” is selected, a list of printer drivers for the local port appears.

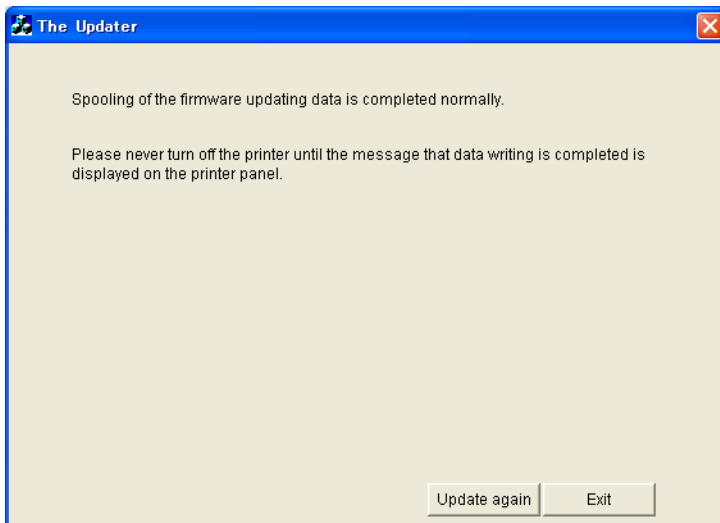
- 1 Select the printer driver, and then click the **[Next]** button.



- 2 A message appears, requesting confirmation to update the firmware. Click the **[Start]** button to begin transferring the firmware.



- 3 The result of the firmware transfer is displayed. Click the [Exit] button.



*If the firmware was successfully updated, the printer will automatically restart.*

*Do not turn off the printer while its firmware is being updated.*

- 4 Print the configuration page from the printer's control panel to check the settings.



*When the firmware is updated, the printer control panel settings may return to their defaults. Refer to the configuration page that was previously printed to reset the settings from the printer's control panel.*



*For details on printing the configuration page and using the printer's control panel, refer to the printer's User's Guide.*

## If Spooling of the Data Fails

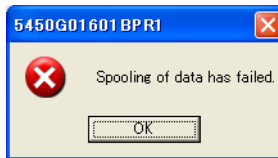
If spooling of the data fails, the following message appears.



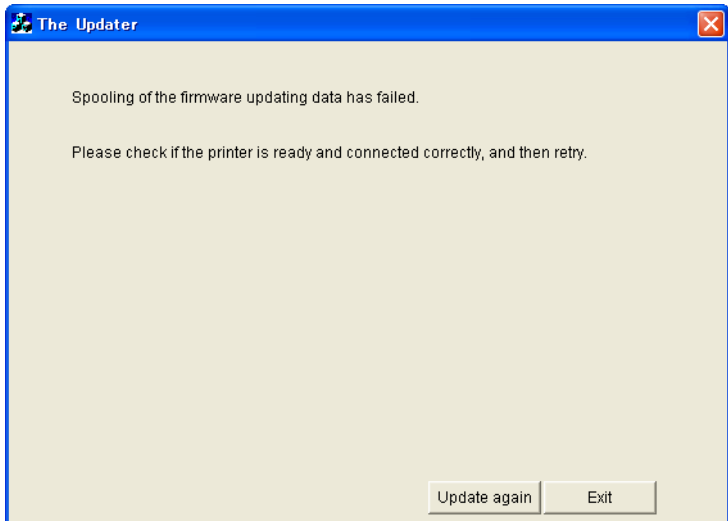
*If spooling fails, data may remain in the printer spooler. Delete this data, and then try again.*

- (Windows XP)  
Click “**Printers and Faxes**” in the **Start** menu, and then double-click the appropriate printer icon. Select “5450Gxxxxxxx” below “**Document Name**”, and then click “**Cancel All Documents**” in the **Printer** menu or “**Cancel**” in the **Document** menu.
- (Windows 2000)  
Click “**Printers**” in the **Start** menu, and then double-click the appropriate printer icon. Select “5450Gxxxxxxx” below “**Document Name**”, and then click “**Cancel All Documents**” in the **Printer** menu or “**Cancel**” in the **Document** menu.

- 1 Click the [OK] button.



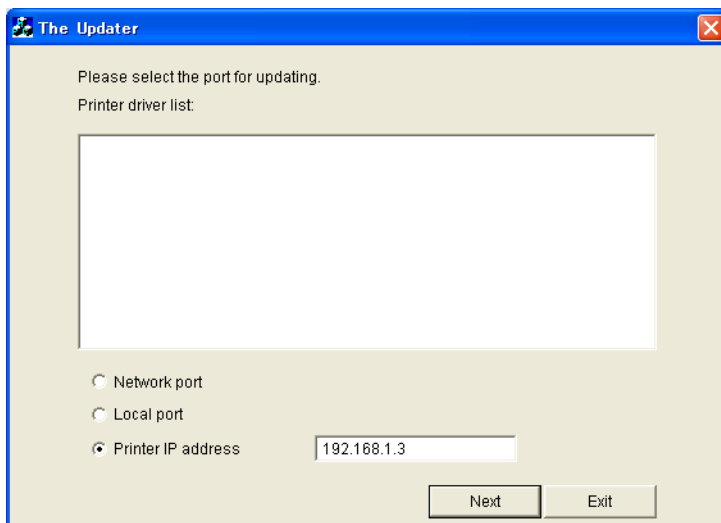
- 2 Check that the printer is ready and that it is correctly connected, and then click the [Update again] button.



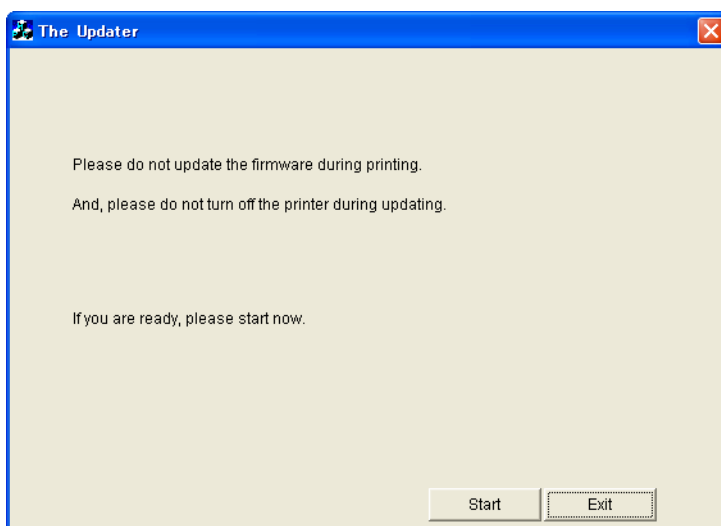
# When Specifying the IP Address of the Printer

When “**Printer IP address**” is selected, the “**Printer IP address**” box becomes available.

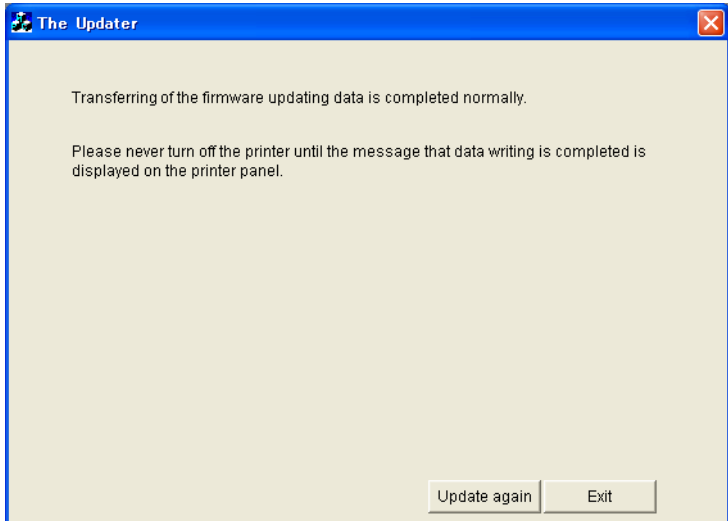
- 1 Type in the IP address, and then click the [**Next**] button.




- 2 A message appears, requesting confirmation to update the firmware. Click the [**Start**] button to begin transferring the firmware.




- 3 The result of the firmware transfer is displayed. Click the **[Exit]** button.




 *If the firmware was successfully updated, the printer will automatically restart.*

*Do not turn off the printer while its firmware is being updated.*

- 4 Print the configuration page from the printer's control panel to check the settings.

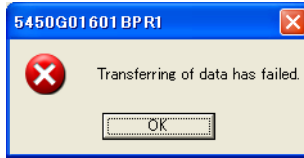
 *When the firmware is updated, the printer control panel settings may return to their defaults. Refer to the configuration page that was previously printed to reset the settings from the printer's control panel.*

 *For details on printing the configuration page and using the printer's control panel, refer to the printer's User's Guide.*

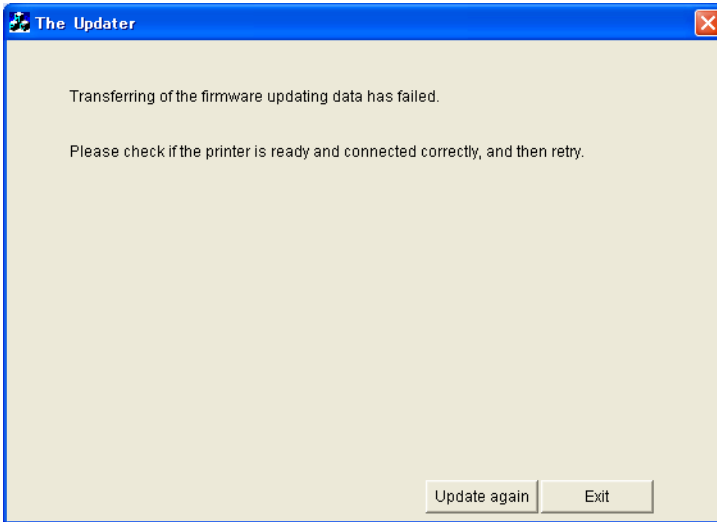
## If Transferring of the Data Fails

If transferring of the data fails, the following message appears.

- 1 Click the [OK] button.



- 2 Check that the printer is ready and that it is correctly connected, and then click the [Update again] button.



---

***Updating the  
Firmware  
(for Macintosh)***

---

**2**

# System Requirements

- Computer:
  - Apple Macintosh computer with a PowerPC G3 or later processor (A PowerPC G4 or later is recommended.)
- Operating system:
  - MacOS X 10.2 or later (We recommend installing the newest patch.)
- Available hard disk space:
  - Approximately 30~42 MB
- Memory:
  - 128 MB or more
- Interface:
  - 10Base-T/100Base-TX/1000Base-T Ethernet
- Compatible printer:
  - magicolor 5450
  - magicolor 7450

# Starting the Firmware Updater



## CAUTION

Before starting the firmware updater, turn on the printer, and make sure that it is correctly connected.

---

---



## CAUTION

When the firmware is updated, the printer control panel settings may return to their defaults. Before starting the firmware updater, be sure to print the configuration page to check the settings. For details on printing the configuration page, refer to the printer's User's Guide.

---

---



## CAUTION

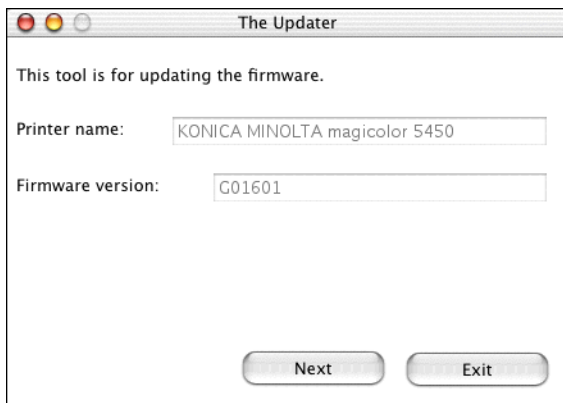
Do not perform any of the following operations while updating the firmware.

- Turn off the printer.
  - Turn off the computer running the firmware updater.
  - Exit the firmware updater.
  - Send a print job to the printer from any other computer on the network.
- 
- 

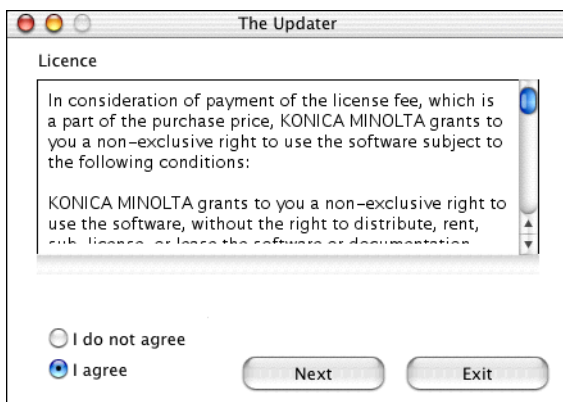
The following procedure describes how to update the firmware for magicolor 5450. Follow the same procedure to update the firmware for magicolor 7450.

- 1 Download the firmware updater from the web site, and then decompress it.
- 2 Double-click "5450Gxxxxxxx".

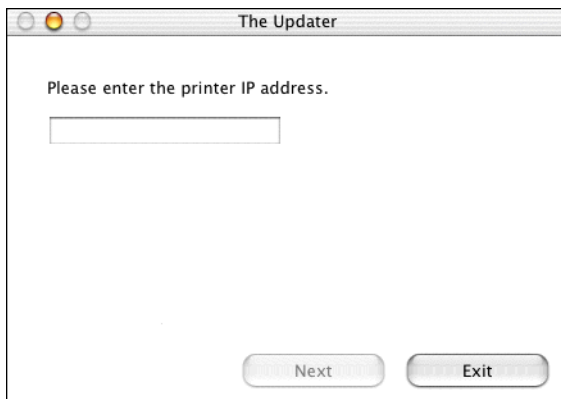
- 3 The printer name and firmware version are displayed. Click the **[Next]** button.



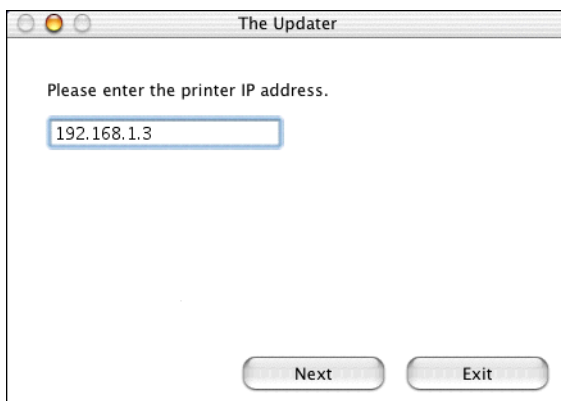
- 4 The license agreement is displayed. Select "**I agree**", and then click the **[Next]** button.



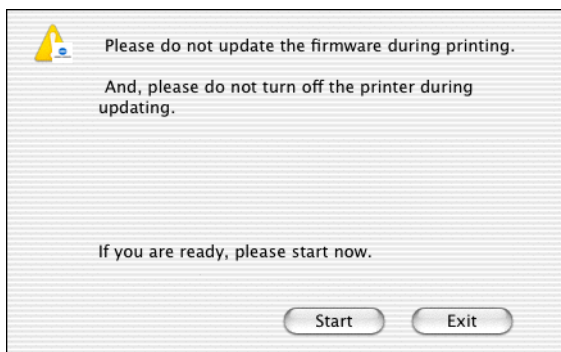
- 5 The screen for specifying the IP address of the printer appears.



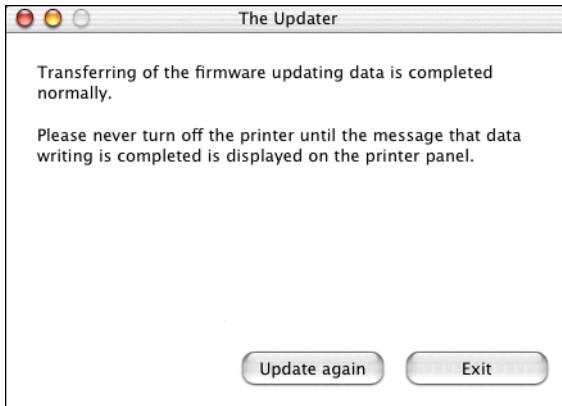
- 6 Type in the IP address, and then click the **[Next]** button.



- 7 A message appears, requesting confirmation to update the firmware. Click the **[Start]** button to begin transferring the firmware.



- 8 The result of the firmware transfer is displayed. Click the [Exit] button.



*If the firmware was successfully updated, the printer will automatically restart.*

*Do not turn off the printer while its firmware is being updated.*

- 9 Print the configuration page from the printer's control panel to check the settings.



*When the firmware is updated, the printer control panel settings may return to their defaults. Refer to the configuration page that was previously printed to reset the settings from the printer's control panel.*

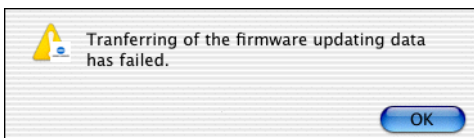


*For details on printing the configuration page and using the printer's control panel, refer to the printer's User's Guide.*

## If Transferring of the Data Fails

If transferring of the data fails, the following message appears.

- 1 Click the **[OK]** button.



- 2 Check that the printer is ready and that it is correctly connected, and then click the **[Update again]** button.

